



Cercis Astro

DslrLite™ - Model 40 Simple DSLR Camera Astrophotography Accessory PRODUCT & ORDERING INFORMATION



Cercis DslrLite is a complete, easy-to-use accessory for astrophotography using Canon or Nikon (see compatibility below) DSLR cameras and a computer.

DslrLite interfaces with the camera's bulb connection. It includes: a 9-pin RS232 serial cable and Windows^R software CD - all that is needed for use with Canon Digital Rebel/XT/XTi (300D, 350D, 400D) cameras. Canon 5D,10D, 20D, or 20Da, require the A611 cable; the A623 IR remote is needed for use with Nikon D50, D70 or D80 cameras.

With a PC, the user selects exposure time, unlimited sequences, and camera settings from the software dialog. DslrLite features include focus mode, sequences, FITS file manipulation or photo format conversion (jpeg, tiff, etc.). Completed exposures are displayed on the computer monitor.

Computer Interface Screens

The Main Program Box of DslrLite is shown at left, along with dialog boxes (Settings, Image Sync, Exposure Sequence, Batch Convert, FITS Header info) shown.

Exposure Sequence...

Type	Count	Exposure	Delay	TV	Av	Iso	Quality	WB	Save As...	Suffix
1	Dark	3	300.0	0	BULB	400	RAW LARGE	Auto	M42	D
2	Light	10	300.0	30	BULB	400	RAW LARGE	Auto	M42	L

Camera and Cable Settings...

Selected Camera: Canon - EOS 300D - Rebel
Camera Mode: Manual
Exposure: [] Delay: 3
Aperture: F5.6
ISO setting: 400
Image Quality: RAW LARGE
White Balance: Custom

Batch Convert

Files to convert:
image_5.crw
image_1.crw
image_2.crw
image_3.crw
image_4.crw

Convert to: TIFF files, 16 bit (*.tiff)
 Apply white balance.

Save Path: C:\Astro Images\
 Use same file name.

File Name: image
Index: 1

FITS header info

Key	Type	Value	Comment
SIMPLE	Boolean	TRUE	
BITPIX	Integer	16	8 unsigned int, 16 & 32 int, -32 & -64 real
NAXIS	Integer	3	number of axes
NAXIS1	Integer	898	fastest changing axis
NAXIS2	Integer	607	next to fastest changing axis
NAXIS3	Integer	3	fastest changing axis
BSCALE	Real	1.0	physical = BZERO + BSCALE * array_value
BZERO	Real	32768.0	physical = BZERO + BSCALE * array_value
DBLACK	Integer	4820	Initial display black level in ADUs
DOWHITE	Integer	16376	Initial display white level in ADUs
END	String		

Compatibility

Cameras: DslrLite is compatible with: Canon¹ 300 Rebel; 350XT; 400XTi; Canon 5D, 10D, 20D/20Da, and 30D. Plus Nikon D50, D70 /D70S, & D80 which require A623 IR remote. Canon cameras (other than Rebel, XT, XTi) require the A611 for bulb connection.

¹Incl. Hutech spectrum-enhanced versions.

Computer: Windows 98, 2000, ME, XP Vista—Canon does not support 300D or 10D. Canon 400D only Vista-compatible in administrator mode.

DslrLite computer connection is compatible with any standard 9-pin RS232-compliant port; it can be connected to a USB-to-RS232 serial port converter. The 3.5 mm stereo plug connects to the bulb port of the camera or A611, A623 (if necessary). In addition to DslrLite cable, the camera's USB is also needed for camera-to-computer connection.

System Requirements (recommended minimum):

- Memory:** 256Mb
- Speed:** 500MHz
- Screen:** 1024 X 768 pixels
- Graphics:** 24 bit high color

DslrStar Controller

For standalone (no computer) operation, the DslrStar astrophotography controller is needed. See reverse for more detail.



Specifications subject to change with notice. All specs @ 25C 07/09DslrLite*Rev.AD

Cercis Astro 25 Rt 31 S, Ste C 2030, Pennington, NJ 08534
TEL: 609-737-5120 FAX: 609-564-0546

URL: <http://www.cercisastro.com>
EMAIL: info@cercisastro.com



Features	
DslrLite Windows Software	DslrLite Hardware
Remote Control Camera, incl Tv, Av, ISO, mode, quality & white balance	RS232 Serial Cable Interface (provided)
Control exposure-save path, with auto file naming & indexing	Optional connections available for Nikon IR Remote and Canon 5D,10D,20D, 20Da
Create, save and load Sequences from the hard disk	
Single/Series/Programmable-sequence exposures, w/ individual control of camera settings for each set in a sequence	RS232-to-USB Converter (recommended MCT U232-P9)
Focus assist zoom view + 2D & 3D star plot diagnostics, FWHM, & metric trend plots. Auto-focus, auto repeat/adjust prevents image saturation	Store FITS files on PC or Camera memory card
Image viewer window—view as down-loaded, or files w/ information for view & edit	Simple Plug-and-Play Setup
Batch-convert dialog—convert multiple image files to any supported format	Minimal parts to pack or store

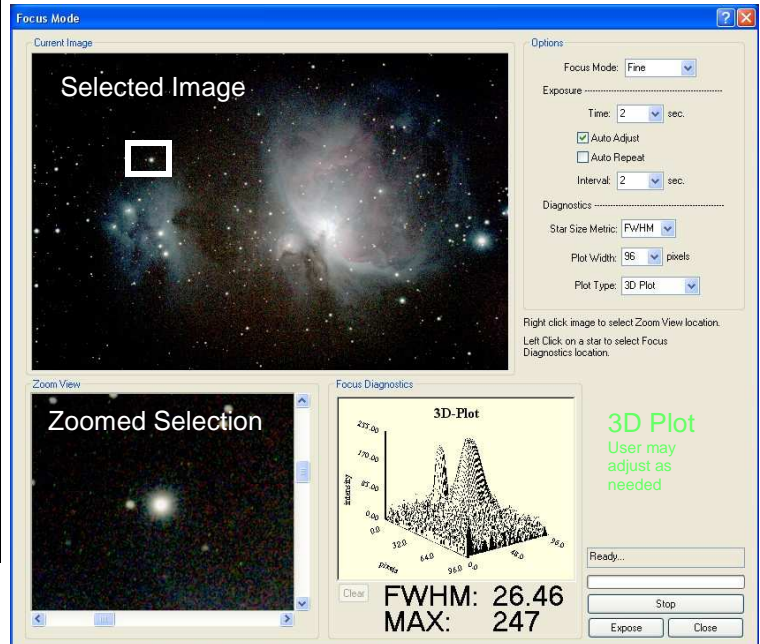
DslrStar Controller: For standalone (no computer) operation, the DslrStar controller is needed. DslrLite and DslrStar are separate products which share only a few accessories between them. The DslrStar controller is housed a rugged metal case, which has control buttons and LED readout, as well as USB computer interface. DslrStar includes AC power transformer, USB cable, and software CD. Optional automotive jack, precision temperature sensor, camera bulb cables or international interchangeable transformers are available.

Operating & Mechanical Data		
Weight—DslrLite	oz	6
Weight—shipping (estimated)	lb	0.75
Temperature Range—Operating	C (F)	-35 to +50 (-30 to 120)
Temperature Range—Storage	C (F)	-35 to +50 (-30 to 120)

Focus Mode (screen shown)

Obtains the best focus when camera is attached to telescope.

For each exposure, the dialog displays the full image resized to fit the dialog; a full size view of a selected area of the image; and focus diagnostic information on a selected star (i.e. star full width at half maximum (FWHM) in pixels, maximum intensity of the star (0-255 scale), a 2- or 3-dimensional plot of the star, or a running plot of either the max intensity or FWHM).



Ordering Information

DslrLite includes Windows^R software and RS232 cable. Optional accessories needed for Canon D-Series (5D, 10D, 20D, 20Da) and Nikon (D50, D70, and D70s) IR Remote. These optional Bulb control cables, are sold separately. To order, please email support@cercisastro.com or call or fax. VISA, MASTERCARD, AMEX, DISCOVER, personal check, or money orders accepted.

DslrLite Controller/Software	Part No
DslrLite (incl Windows Software CD & RS232 cable)	40*
Bulb Cables	Part No
Canon 5D, 10D, 20D, 20Da, 30D Cable (must add to DslrLite RS232 cable)	A611
IR Emitter (for Nikon D50, D70, D70S)	A623
Accessories	Part No
USB-to-Serial (RS232) Converter	A621

*DslrLite incl CD & RS232 cable Vista compatibility to be announced Windows are registered trademarks of MicroSoft Corp.

